

## Baseball Domes

If you are looking for a venue to play indoor baseball, an air-supported structure is your only real option. No other building system can provide the amount of clear span space needed for baseball at an economical price.

### **Advantages of a Farley Dome:**

- without need for any steel support beams, an air structure is an economical choice compared to other building options
- the erection of an air structure takes just a fraction of the time of other building methods, allowing for much shorter construction schedules
- air structures are the only building method that makes it feasible to remove the structure during summer months, or to allow for easy relocation to a new site
- If the need arises for a larger facility, expanding or modifying an air structure is a simple procedure and can be accomplished with a minimum of disruption
- with generous ceiling heights, interference with ball flight is never a problem, and a dark colored liner fabric installed at eye level makes it easy for players to keep their eye on the ball!



Connecticut Sportsplex, North Branford, CT

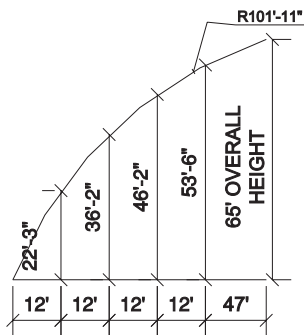
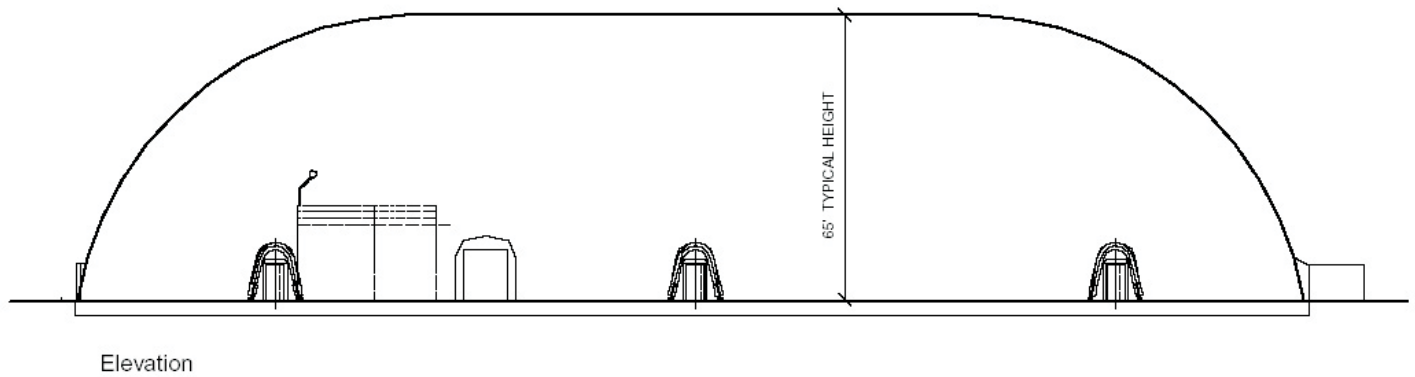
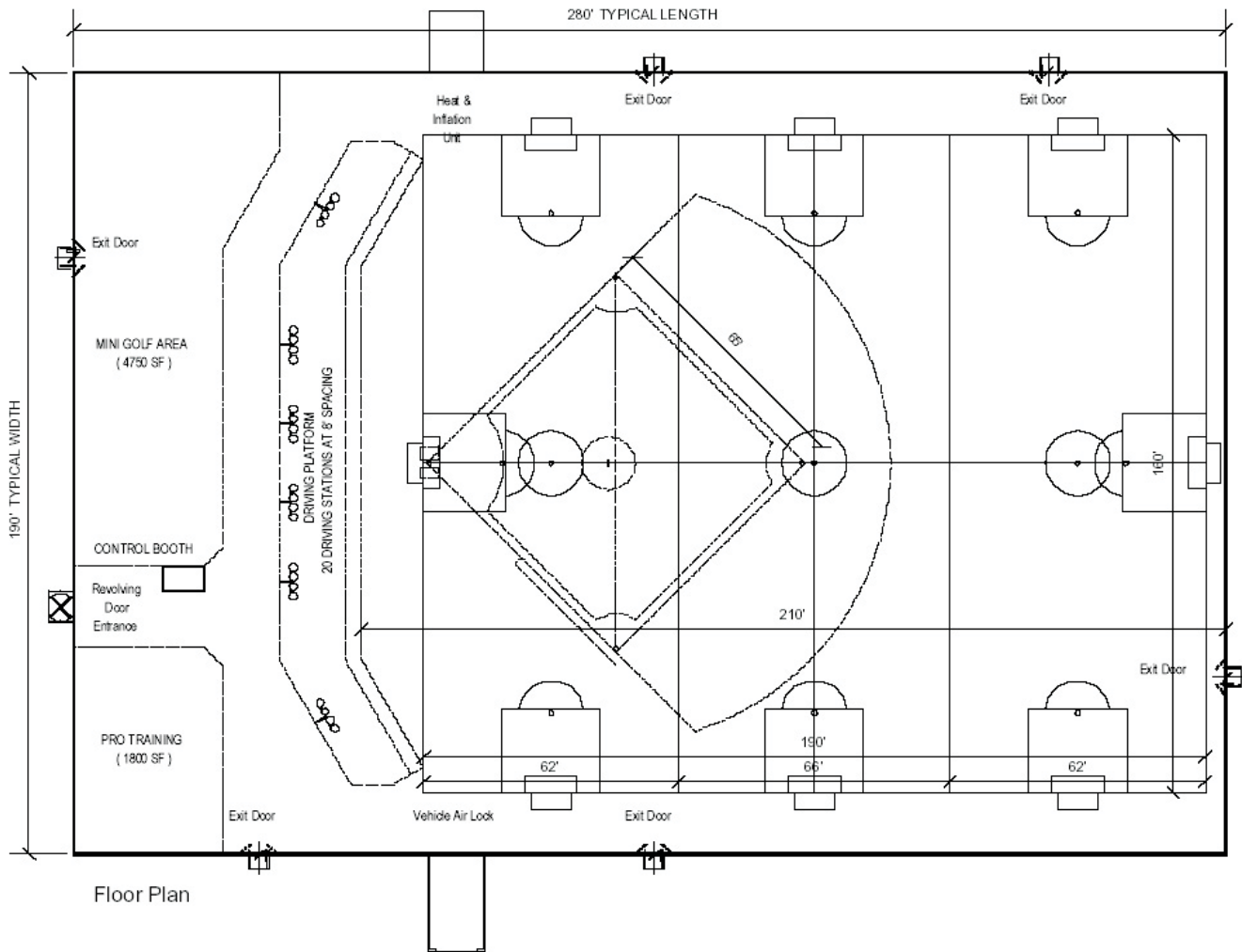


The Playing Fields, Jessup, PA

## The Farley Advantage

- **all structures are custom designed to the client's specifications**
- **innovative energy saving lighting, insulation and mechanical systems**
- **sales, design, manufacturing, installation and service all done in-house**
- **service teams located on east and west coasts, 24hrs a day**
- **industry leading PVC fabrics with PVDF or optional Tedlar topcoats providing:**

**WARRANTIES OF UP TO 15 YEARS!**



## ***Sample Baseball / Multi-Sport Layout***

**Distances From The Side Wall  
(End Wall Radius Can Vary)**



***Air-Supported Structures***