

## Volleyball Domes

An air-supported structure can be the ideal building solution for your volleyball gym. A dome is affordable, easily customizable, quickly erected, clear span space.

### **Advantages of a Farley Dome:**

- without need for any steel support beams, an air structure is an economical choice compared to other building options
- the erection of an air structure takes just a fraction of the time of other building methods, allowing for much shorter construction schedules
- air structures are the only building method that makes it feasible to remove the structure during summer months, or to allow for easy relocation to a new site
- If the need arises for a larger facility, expanding or modifying an air structure is a simple procedure and can be accomplished with a minimum of disruption
- dark colored liner fabric can be installed at eye level making it easy for players to keep their eye on the ball, and generous ceiling heights eliminate interference with ball flight



Harry Jerome Sports Centre, Vancouver, BC

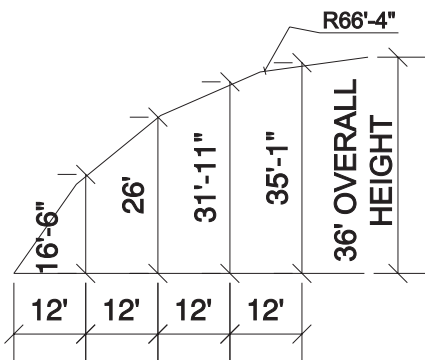
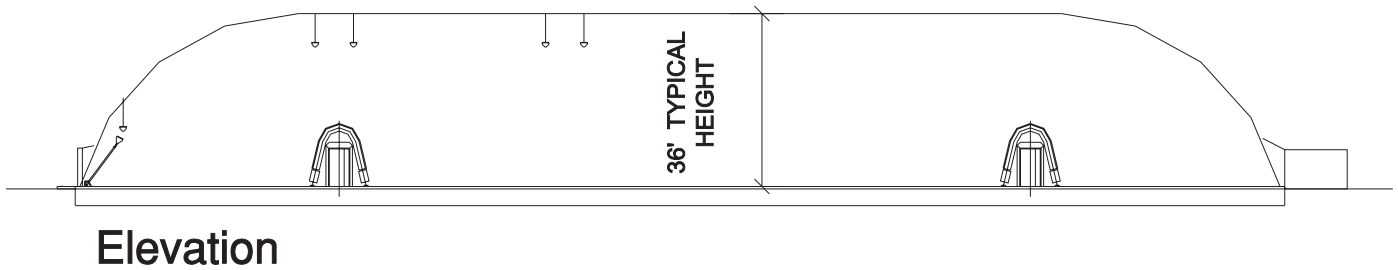
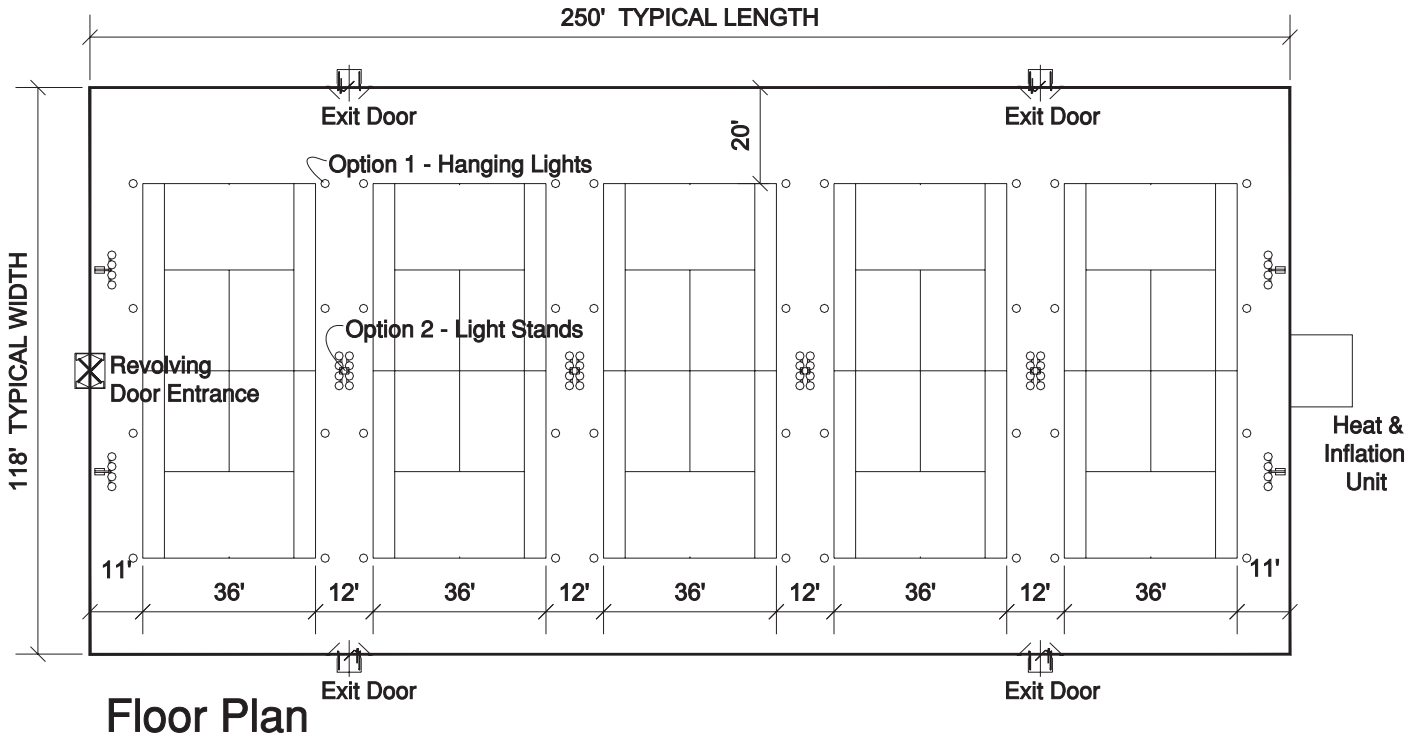


The Volley Dome, Calgary, AB

## **The Farley Advantage**

- **all structures are custom designed to the client's specifications**
- **innovative energy saving lighting, insulation and mechanical systems**
- **sales, design, manufacturing, installation and service all done in-house**
- **service teams located on east and west coasts, 24hrs a day**
- **industry leading PVC fabrics with PVDF or optional Tedlar topcoats providing:**

**WARRANTIES OF UP TO 15 YEARS!**



## **Sample Volleyball Layout**

**Distances From The Side Wall  
(End Wall Radius Can Vary)**



**Air-Supported Structures**